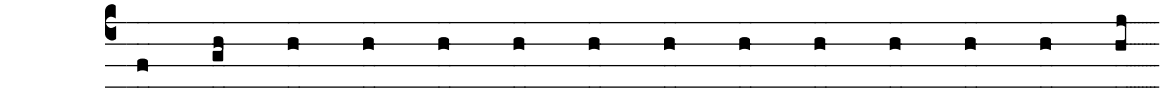


Tones of the Gloria Patri

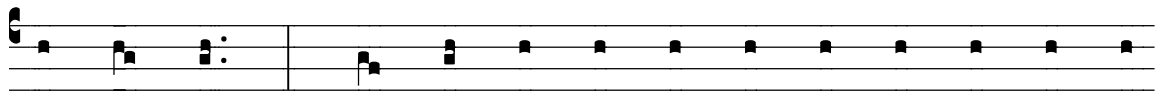
For Use With Introits and Communion Antiphons

These are given in conventional chant notation so that they can be used with antiphons in all keys.

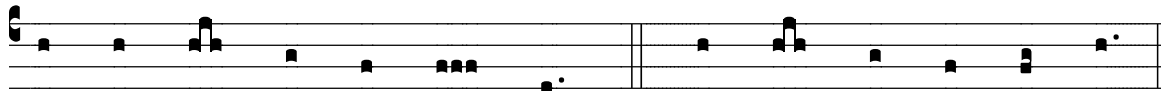
Tone 1



Glo- ry to the Fa- ther, and to the Son, and to the Ho-



ly Spir- it: as it was in the be- gin- ning, is now, and



will be for ev- er. A- men. *or* be for- ev- er. A- men.

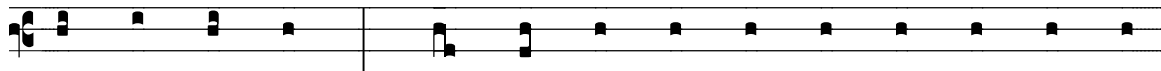


or be for- ev- er. A- men.

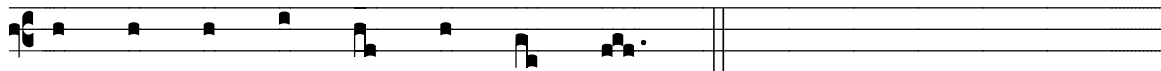
Tone 2



Glo- ry to the Fa- ther, and to the Son, and to the



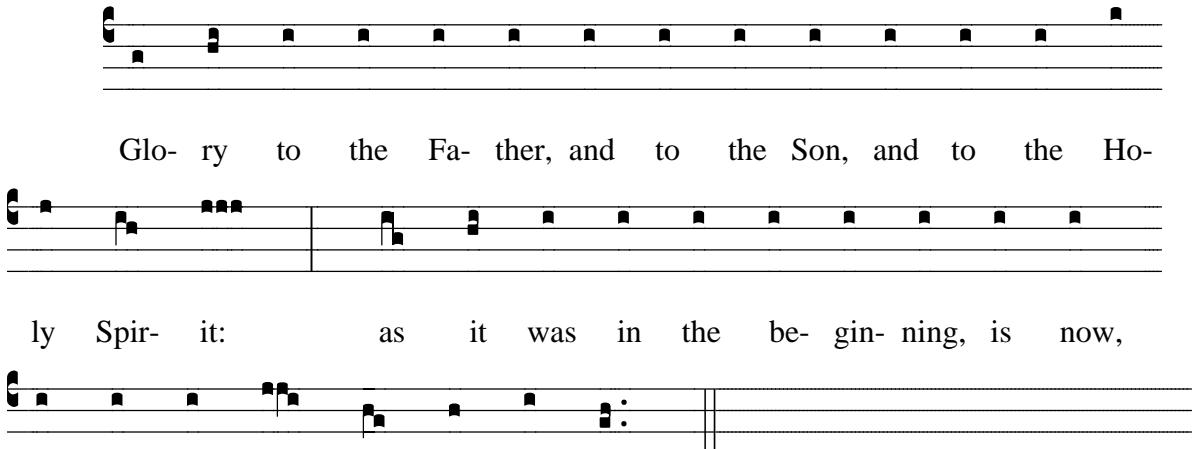
Ho- ly Spir- it: as it was in the be- gin- ning, is now,



and will be for ev- er. A- men.

Tones of the Gloria Patri

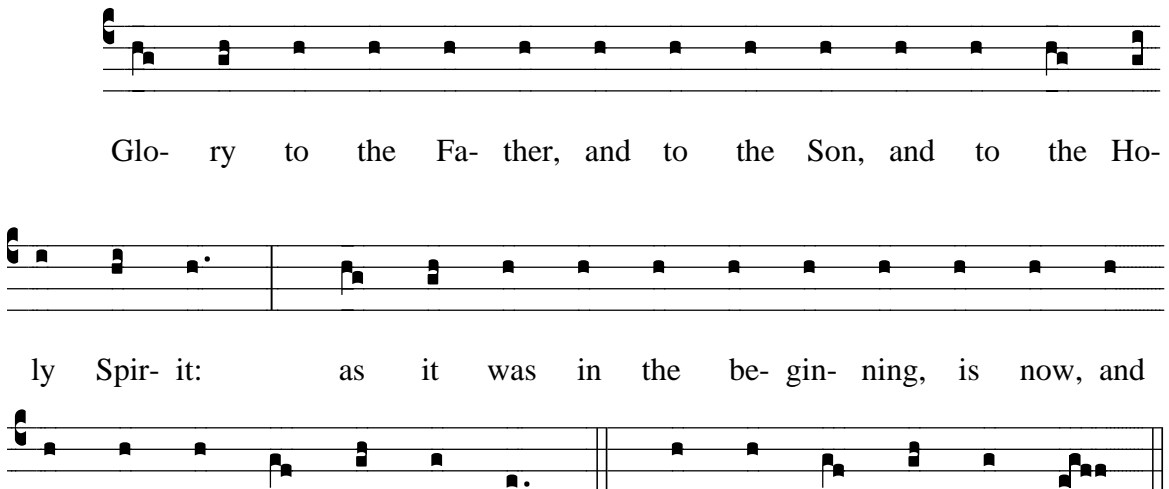
Tone 3



Glo- ry to the Fa- ther, and to the Son, and to the Ho-
ly Spir- it: as it was in the be- gin- ning, is now,
and will be for- ev- er. A- men.

The musical notation for Tone 3 consists of three staves. The first staff shows a melodic line starting on a G-clef with a key signature of one flat. The notes are: G4, A4, Bb4, C5, D5, E5, F5, G5, A5, Bb5, C6, D6, E6, F6, G6. The second staff continues the melody with lyrics: "Glo- ry to the Fa- ther, and to the Son, and to the Ho-". The third staff continues with lyrics: "ly Spir- it: as it was in the be- gin- ning, is now," and ends with a double bar line and repeat dots. The lyrics "and will be for- ev- er. A- men." are written below the staff.

Tone 4

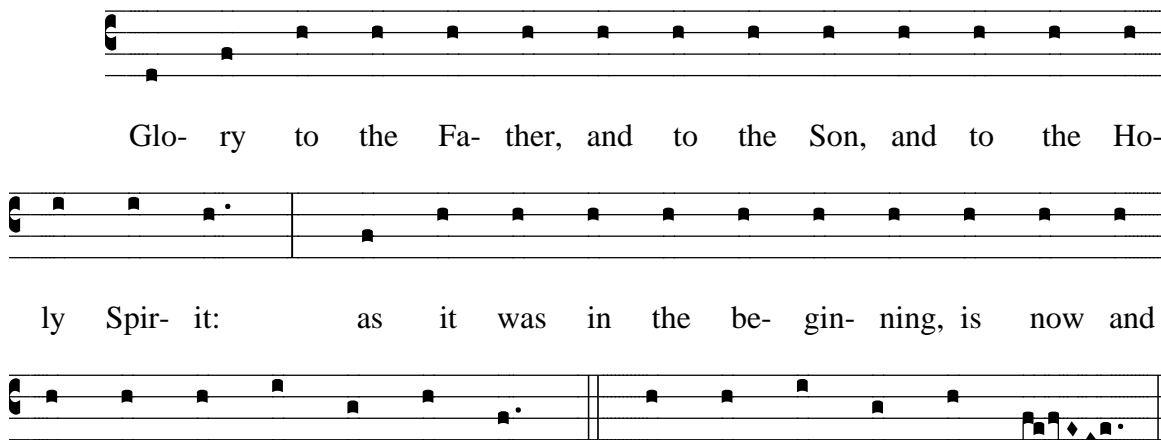


Glo- ry to the Fa- ther, and to the Son, and to the Ho-
ly Spir- it: as it was in the be- gin- ning, is now, and
will be for ev- er. A- men. *or* be for ev- er. A- men.

The musical notation for Tone 4 consists of three staves. The first staff shows a melodic line starting on a G-clef with a key signature of one flat. The notes are: G4, A4, Bb4, C5, D5, E5, F5, G5, A5, Bb5, C6, D6, E6, F6, G6. The second staff continues the melody with lyrics: "Glo- ry to the Fa- ther, and to the Son, and to the Ho-". The third staff continues with lyrics: "ly Spir- it: as it was in the be- gin- ning, is now, and" and ends with a double bar line and repeat dots. The lyrics "will be for ev- er. A- men. *or* be for ev- er. A- men." are written below the staff.

Tones of the Gloria Patri

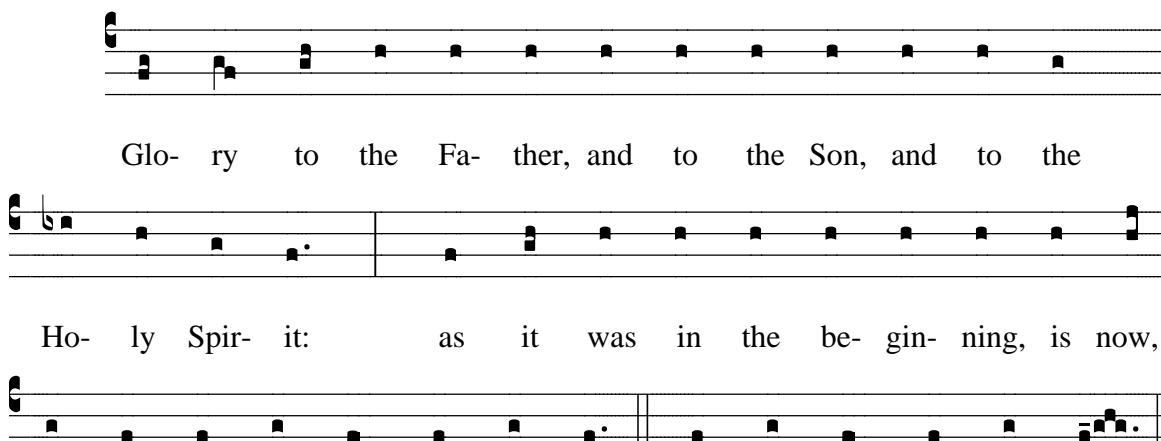
Tone 5



Glo- ry to the Fa- ther, and to the Son, and to the Ho-
ly Spir- it: as it was in the be- gin- ning, is now and
will be for ev- er. A- men. *or* be for ev- er. A- men.

The musical notation for Tone 5 consists of three staves. The first staff contains the melody for "Glo- ry to the Fa- ther, and to the Son, and to the Ho-". The second staff contains the melody for "ly Spir- it: as it was in the be- gin- ning, is now and". The third staff contains the melody for "will be for ev- er. A- men. or be for ev- er. A- men." and ends with a double bar line.

Tone 6

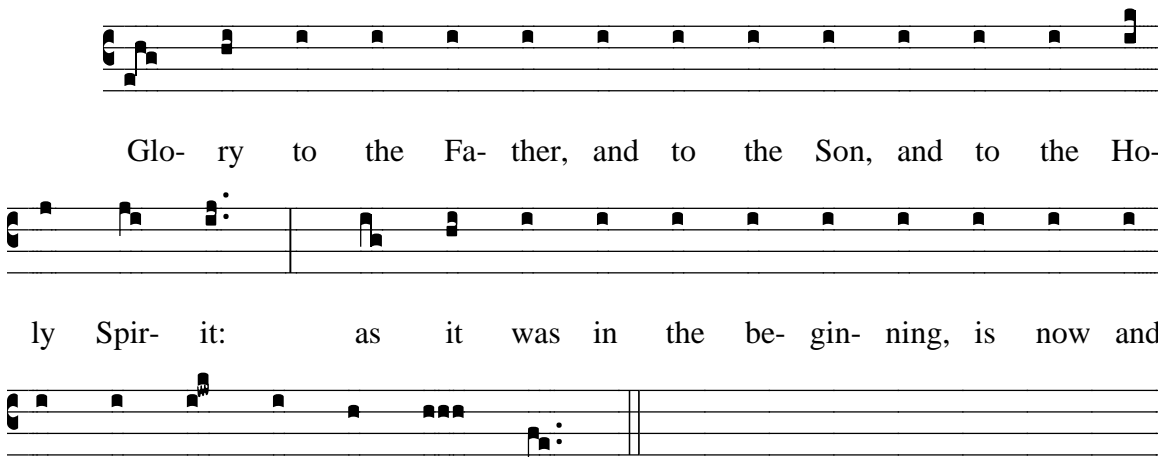


Glo- ry to the Fa- ther, and to the Son, and to the
Ho- ly Spir- it: as it was in the be- gin- ning, is now,
and will be for- ev- er. A- men. *or* be for ev- er. A- men.

The musical notation for Tone 6 consists of three staves. The first staff contains the melody for "Glo- ry to the Fa- ther, and to the Son, and to the". The second staff contains the melody for "Ho- ly Spir- it: as it was in the be- gin- ning, is now,". The third staff contains the melody for "and will be for- ev- er. A- men. or be for ev- er. A- men." and ends with a double bar line.

Tones of the Gloria Patri

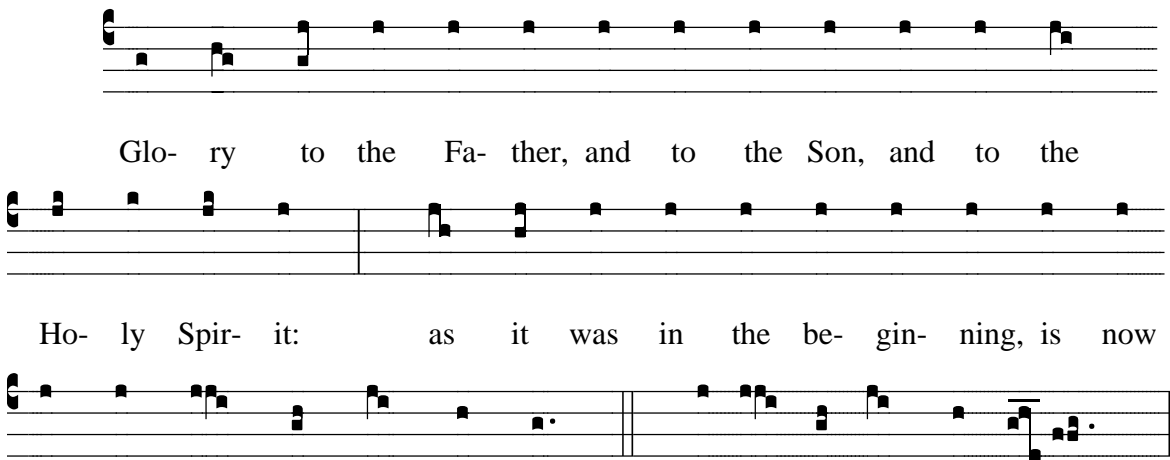
Tone 7



Glo- ry to the Fa- ther, and to the Son, and to the Ho-
ly Spir- it: as it was in the be- gin- ning, is now and
will be for- ev- er. A- men.

The musical notation for Tone 7 is written on a five-line staff in G-clef. It begins with a G4 quarter note, followed by a series of quarter notes: A4, B4, C5, D5, E5, F5, G5, A5, B5, C6, D6, E6, F6, G6, A6, B6, C7. The melody concludes with a G6 quarter note and a final G6 half note.

Tone 8



Glo- ry to the Fa- ther, and to the Son, and to the
Ho- ly Spir- it: as it was in the be- gin- ning, is now
will be for- ev- er. A- men. *or* be for- ev- er. A- men.

The musical notation for Tone 8 is written on a five-line staff in G-clef. It begins with a G4 quarter note, followed by a series of quarter notes: A4, B4, C5, D5, E5, F5, G5, A5, B5, C6, D6, E6, F6, G6, A6, B6, C7. The melody concludes with a G6 quarter note and a final G6 half note.